

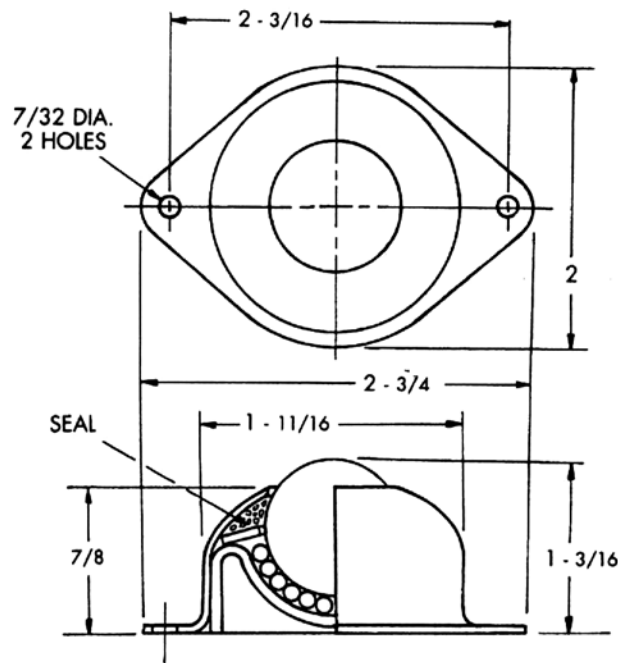
BALL TRANSFER ITEM #27025



Roller feed tables enable work to be easily positioned by the operator; in many cases with just one hand. Productivity is increased and worker fatigue minimized.

Features:

- 1" Main ball rotates on (80) 1/8" support balls
- Ball support cup is hardened and plated
- Protective cover assures low torque and longevity
- Units are manufactured in plated carbon steel to provide corrosion resistance



Ordering Information			
Item#	Code	Description	Quantity
27025	BT100	Ball Transfer	10 Per Ctn.

Sold Per Carton Only

Duro Dyne East Division, Bay Shore, NY	631-249-9000	Fax: 631-249-8346
Duro Dyne Midwest Division, Hamilton, OH	513-870-6000	Fax: 513-870-6005
Duro Dyne West Division, Longmont, CO	562-926-1774	Fax: 562-926-5778
Duro Dyne Canada, Lachine, Quebec, Canada	514-422-9760	Fax: 514-636-0328
www.durodyne.com E-mail: durodyne@durodyne.com		