

SUBMITTAL RECORD

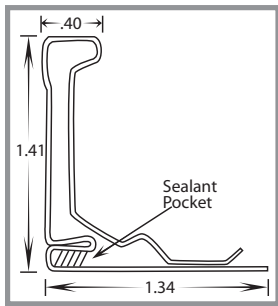
JOB _____
 LOCATION _____
 SUBMITTED TO _____
 SUBMITTAL PREPARED BY _____
 APPROVED BY _____
 DATE _____



**Submittal Form
 FLANGE**

**SEALANT POCKET
 FOR ALL FLANGE**
 Flame Spread - 5
 Smoke Density - 0
 Fuel Contribution - 0
 Life Expectancy - 20yr minimum

J Flange

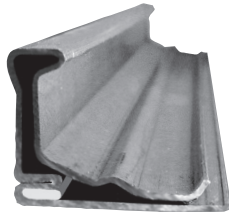
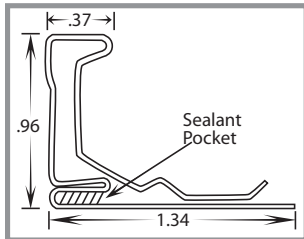


DOMJ Flange

- Designed to strengthen the duct wall and connect duct sections together.
- Furnished with an integrated sealant pocket for a secure air tight fit.
- Manufactured from 20-gauge steel in 10ft., 12ft. & 20ft. lengths.
- DOMJ is designed for large commercial and high-pressure applications.
- Bundles of 20ft. lengths available only with a Full Truckload order.
- Specialty metal available upon request.

Item #	Code	Description
21230	DOMJ20	J Flange -20ft.
21236	DOMJ20SS	Stainless Steel J Flange -20ft.
21238	DOMJ20AL	Aluminum J Flange -20ft.
21234	DOMJ12	J Flange-12ft.
21233	DOMJ10	J Flange-10ft.

H Flange



DOMH Flange

- Designed to strengthen the duct wall and connect duct sections together.
- Furnished with an integrated sealant pocket for a secure air tight fit.
- Manufactured from 22-gauge steel in both 12ft. & 20ft. lengths.
- DOMH is designed for low to medium pressure or residential applications.
- Bundles of 20ft. lengths available only with a Full Truckload order.
- Specialty metal available upon request.

Item #	Code	Description
21231	DOMH20	H Flange-20ft.
21235	DOMH12	H Flange -12ft.

